




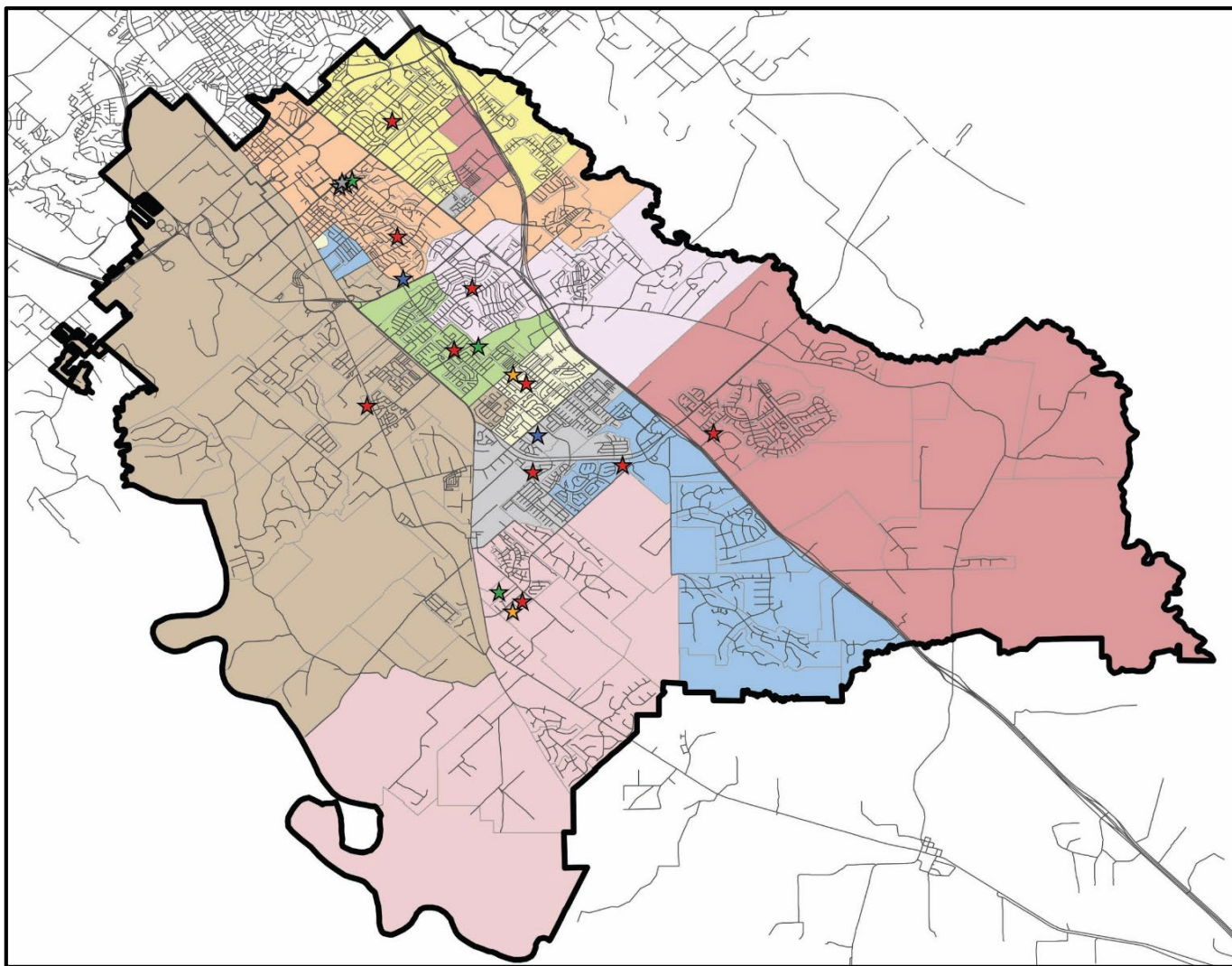


2018 Elementary School Boundary Adjustment

October 8, 2018

October 1 Recommended Elementary Attendance Zones

-  **College Hills**
-  **Creek View**
-  **Forest Ridge**
-  **Greens Prairie**
-  **Pebble Creek**
-  **River Bend**
-  **Rock Prairie**
-  **South Knoll**
-  **Southwood Valley**
-  **Spring Creek**



To RB from:
SK, GP, SC,
RP, CV and FR

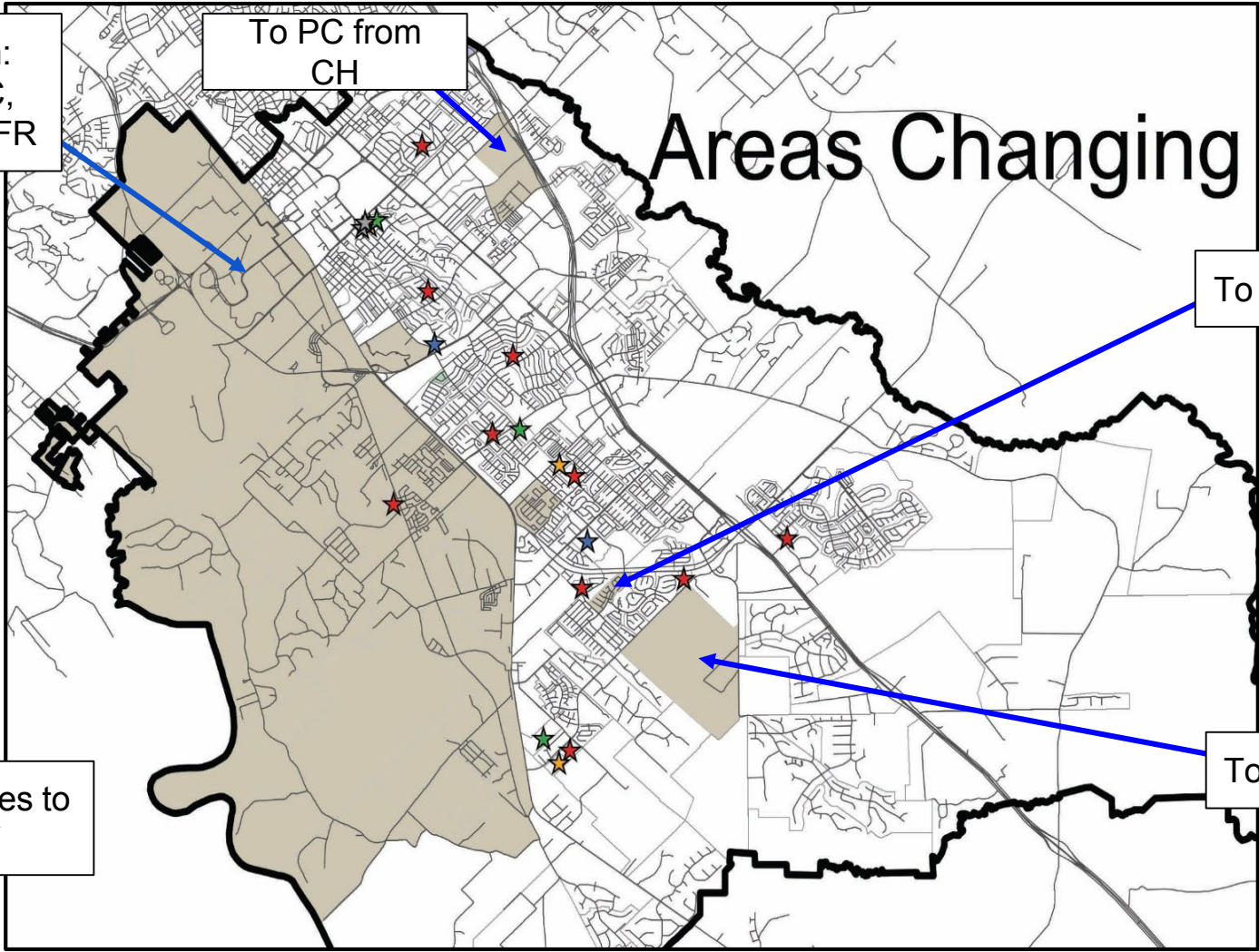
To PC from
CH

Areas Changing

To SC from FR

To GP from FR

No changes to
SWV





October 1 Projected Enrollment

Campus	Range	19-20
College Hills	561-726	632
Creek View	544-704	527
Forest Ridge	544-704	639
Greens Prairie	561-726	542
Pebble Creek	527-682	521
River Bend	561-726	438
Rock Prairie	527-682	521
South Knoll	561-726	613
SW Valley	561-726	536
Spring Creek	561-726	655
Total		5,624

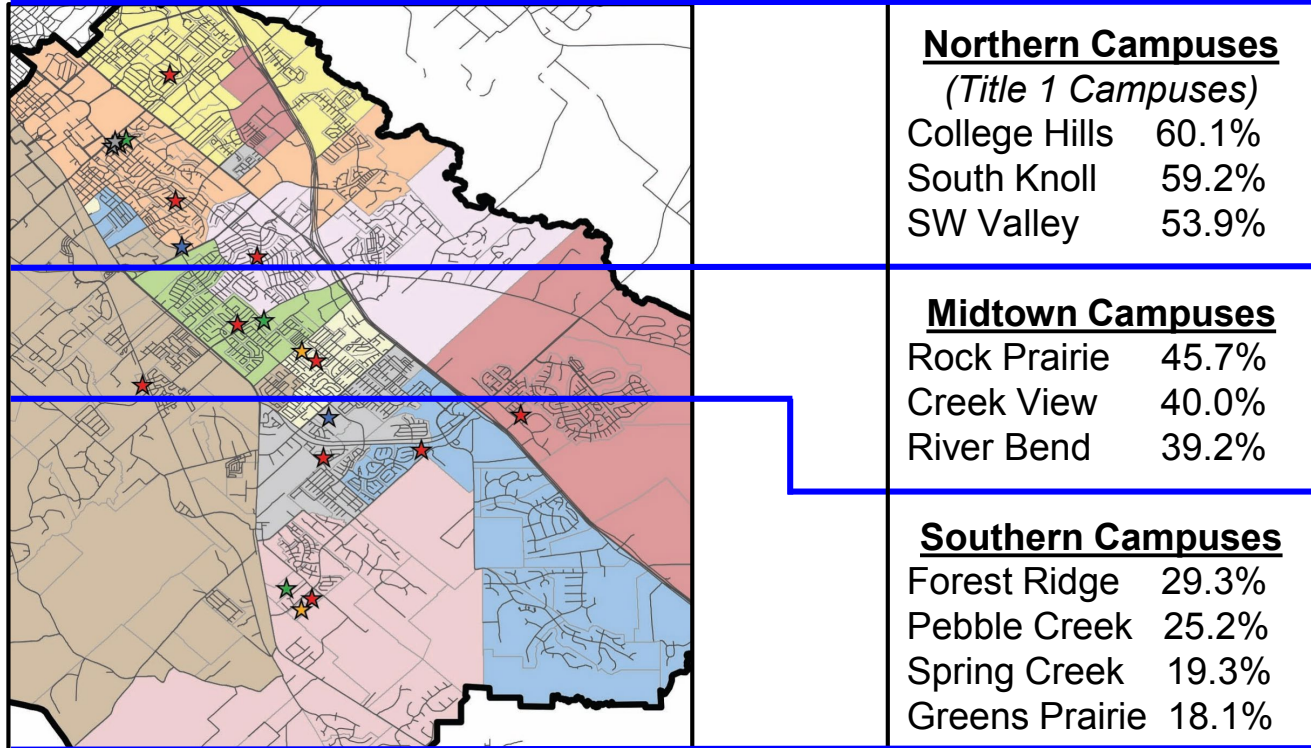


October 1 Projected Enrollment

Campus	Range	19-20	20-21	21-22	22-23	23-24	24-25	25-26
College Hills	561-726	632	651	653	668	680	693	699
Creek View	544-704	527	522	551	566	586	595	604
Forest Ridge	544-704	639	661	688	702	707	703	694
Greens Prairie	561-726	542	572	628	666	698	719	730
Pebble Creek	527-682	521	584	636	694	734	754	757
River Bend	561-726	438	461	486	507	521	527	538
Rock Prairie	527-682	521	521	501	501	512	507	526
South Knoll	561-726	613	617	630	624	626	623	618
SW Valley	561-726	536	526	518	519	544	573	602
Spring Creek	561-726	655	655	666	657	676	680	689
Total		5,624	5,770	5,957	6,104	6,284	6,374	6,457



October 1 - Percent Econ. Disadvantaged





October 8 Recommended Attendance Zones



Castlegate Feedback

- Safety concerns crossing Victoria.
 - By moving the boundary between Forest Ridge and Spring Creek to Victoria, none of the students will have to cross Victoria.
- Created a need to reduce number of students from Forest Ridge from another location.
 - Expanded SW Parkway Apartments area moving from Forest Ridge to River Bend.



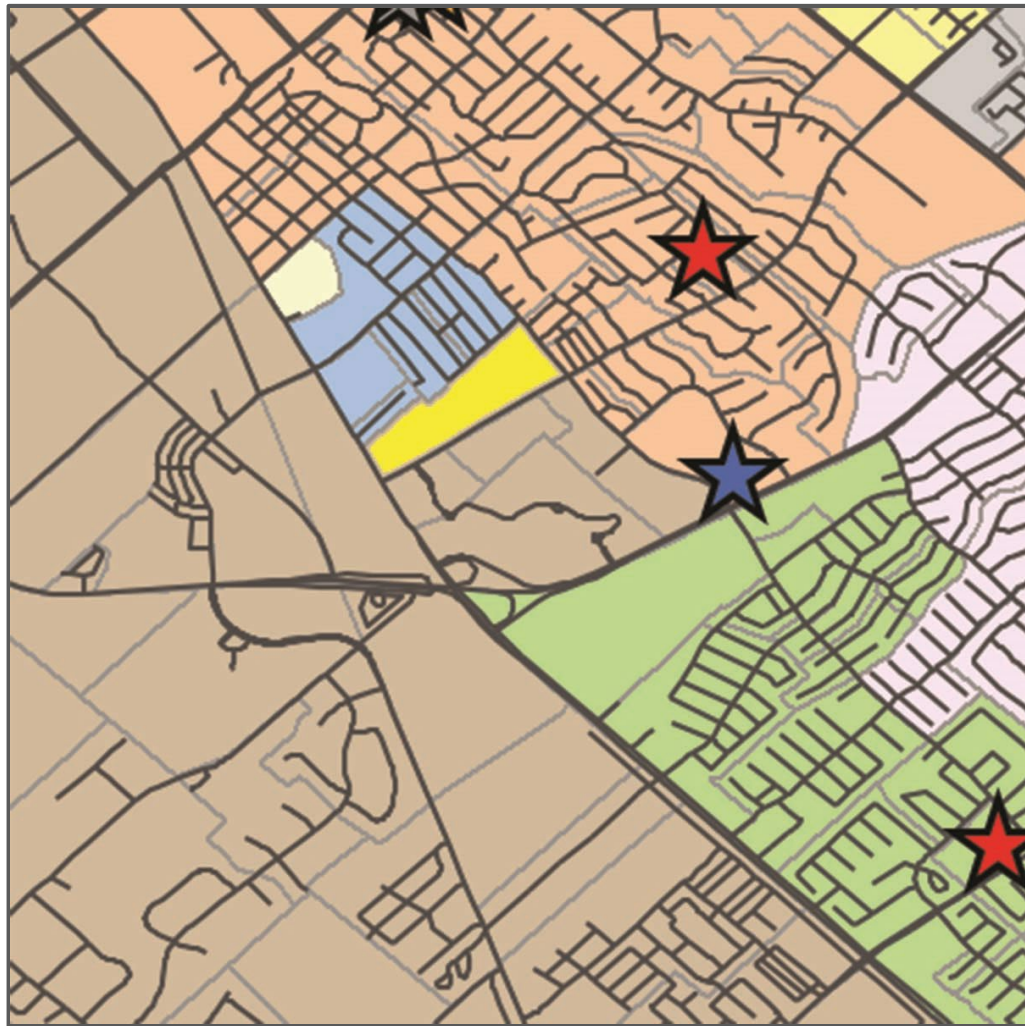
Moved the boundary between Forest Ridge and Spring Creek to Victoria.

- College Hills**
- Creek View**
- Forest Ridge**
- Greens Prairie**
- Pebble Creek**
- River Bend**
- Rock Prairie**
- South Knoll**
- Southwood Valley**
- Spring Creek**



Moved the boundary between Forest Ridge and Spring Creek to Victoria.

- College Hills**
- Creek View**
- Forest Ridge**
- Greens Prairie**
- Pebble Creek**
- River Bend**
- Rock Prairie**
- South Knoll**
- Southwood Valley**
- Spring Creek**



Moved the boundary to include the apartments on the North side of SW Parkway.

- College Hills**
- Creek View**
- Forest Ridge**
- Greens Prairie**
- Pebble Creek**
- River Bend**
- Rock Prairie**
- South Knoll**
- Southwood Valley**
- Spring Creek**



Moved the boundary to include the apartments on the North side of SW Parkway.

- College Hills**
- Creek View**
- Forest Ridge**
- Greens Prairie**
- Pebble Creek**
- River Bend**
- Rock Prairie**
- South Knoll**
- Southwood Valley**
- Spring Creek**



Oct. 8 - Projected Enrollment (Victoria / SW Pk.)

Campus	Range	Oct. 1	Oct. 8	Net Difference
College Hills	561-726	632	632	0
Creek View	544-704	527	527	0
<u>Forest Ridge</u>	544-704	639	592	-47
Greens Prairie	561-726	542	542	0
Pebble Creek	527-682	521	521	0
<u>River Bend</u>	561-726	438	505	+67
Rock Prairie	527-682	521	521	0
South Knoll	561-726	613	613	0
SW Valley	561-726	536	536	0
<u>Spring Creek</u>	561-726	655	635	-20
Total		5,624		



Edelweiss Gartens Feedback

- There were three closer schools to the subdivision.
 - The previous moves added 67 students to River Bend.
 - Moved Edelweiss Gartens back to current schools (Rock Prairie and Creek View) which have room.



Moved the Edelweiss Gartens areas back to current attendance zones.

- College Hills**
- Creek View**
- Forest Ridge**
- Greens Prairie**
- Pebble Creek**
- River Bend**
- Rock Prairie**
- South Knoll**
- Southwood Valley**
- Spring Creek**



Moved the Edelweiss Gartens areas back to current attendance zones.

- College Hills**
- Creek View**
- Forest Ridge**
- Greens Prairie**
- Pebble Creek**
- River Bend**
- Rock Prairie**
- South Knoll**
- Southwood Valley**
- Spring Creek**



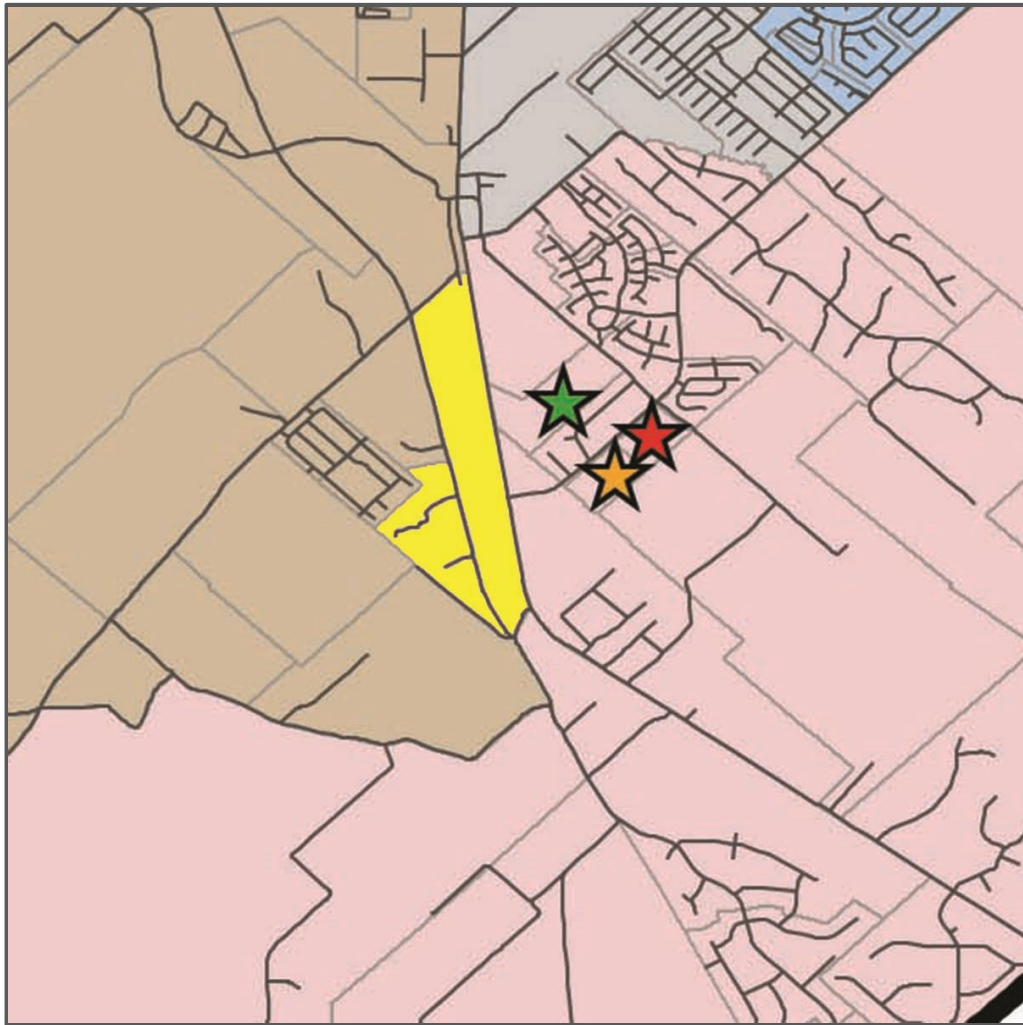
Oct. 8 - Projected Enrollment (Victoria / SW Pk. / EG)

Campus	Range	Oct. 1	Oct. 8	Net Difference
College Hills	561-726	632	632	0
<u>Creek View</u>	544-704	527	529	+2
Forest Ridge	544-704	639	592	-47
Greens Prairie	561-726	542	542	0
Pebble Creek	527-682	521	521	0
<u>River Bend</u>	561-726	438	451	+13
<u>Rock Prairie</u>	527-682	521	573	+52
South Knoll	561-726	613	613	0
SW Valley	561-726	536	536	0
Spring Creek	561-726	655	635	-20
Total		5,624		



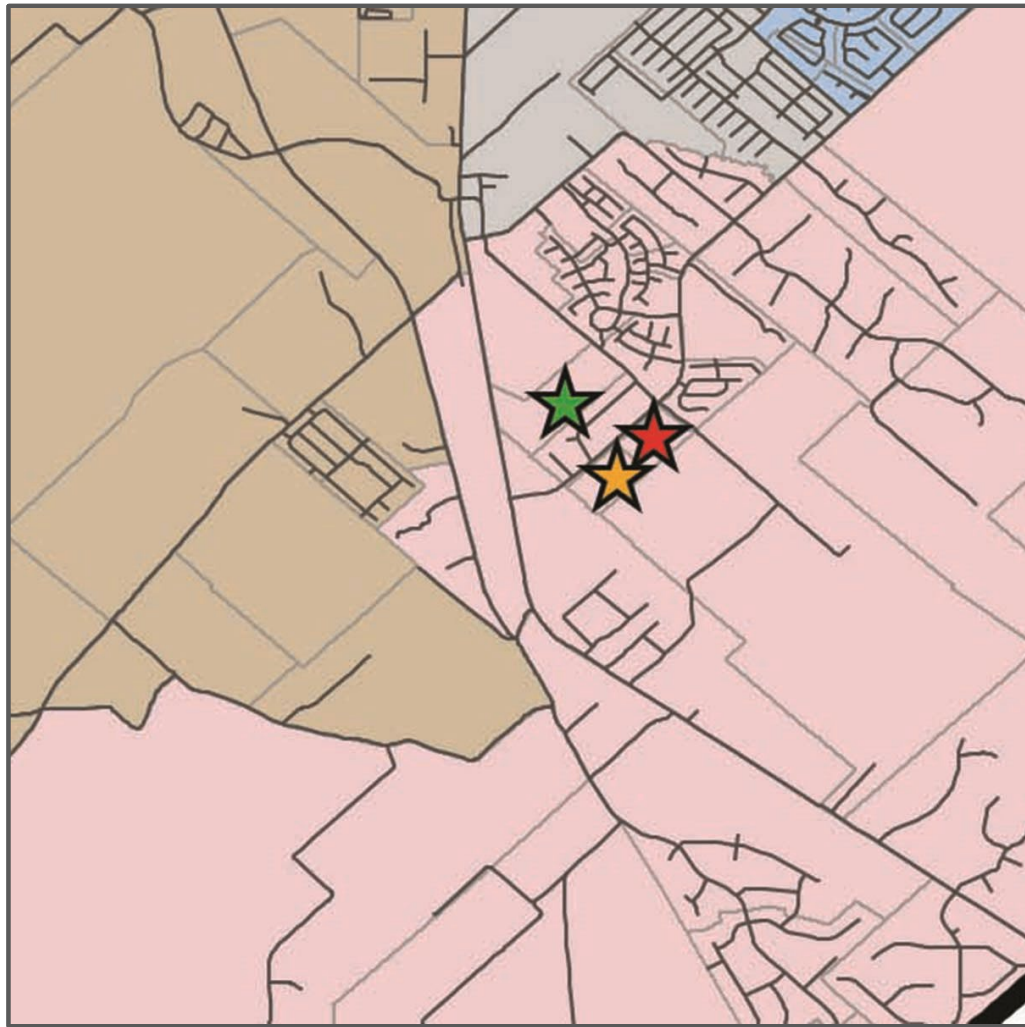
Iris Lane / Hidden Acres Feedback

- Much closer to Greens Prairie and easy access to Greens Prairie Trail.
- Very small number of students.
- Moved the area back to Greens Prairie.





Moved the Iris Lane / Hidden Acres area back to Greens Prairie.

-  **College Hills**
-  **Creek View**
-  **Forest Ridge**
-  **Greens Prairie**
-  **Pebble Creek**
-  **River Bend**
-  **Rock Prairie**
-  **South Knoll**
-  **Southwood Valley**
-  **Spring Creek**



Moved the Iris Lane area back to Greens Prairie.

-  **College Hills**
-  **Creek View**
-  **Forest Ridge**
-  **Greens Prairie**
-  **Pebble Creek**
-  **River Bend**
-  **Rock Prairie**
-  **South Knoll**
-  **Southwood Valley**
-  **Spring Creek**



Oct. 8 - Projected Enrollment (Victoria / SW Pk. / EG / Iris)

Campus	Range	Oct. 1	Oct. 8	Difference
College Hills	561-726	632	632	0
Creek View	544-704	527	529	+2
Forest Ridge	544-704	639	592	-47
<u>Greens Prairie</u>	561-726	542	549	+7
Pebble Creek	527-682	521	521	0
<u>River Bend</u>	561-726	438	444	+6
Rock Prairie	527-682	521	573	+52
South Knoll	561-726	613	613	0
SW Valley	561-726	536	536	0
Spring Creek	561-726	655	635	-20
Total		5,624		

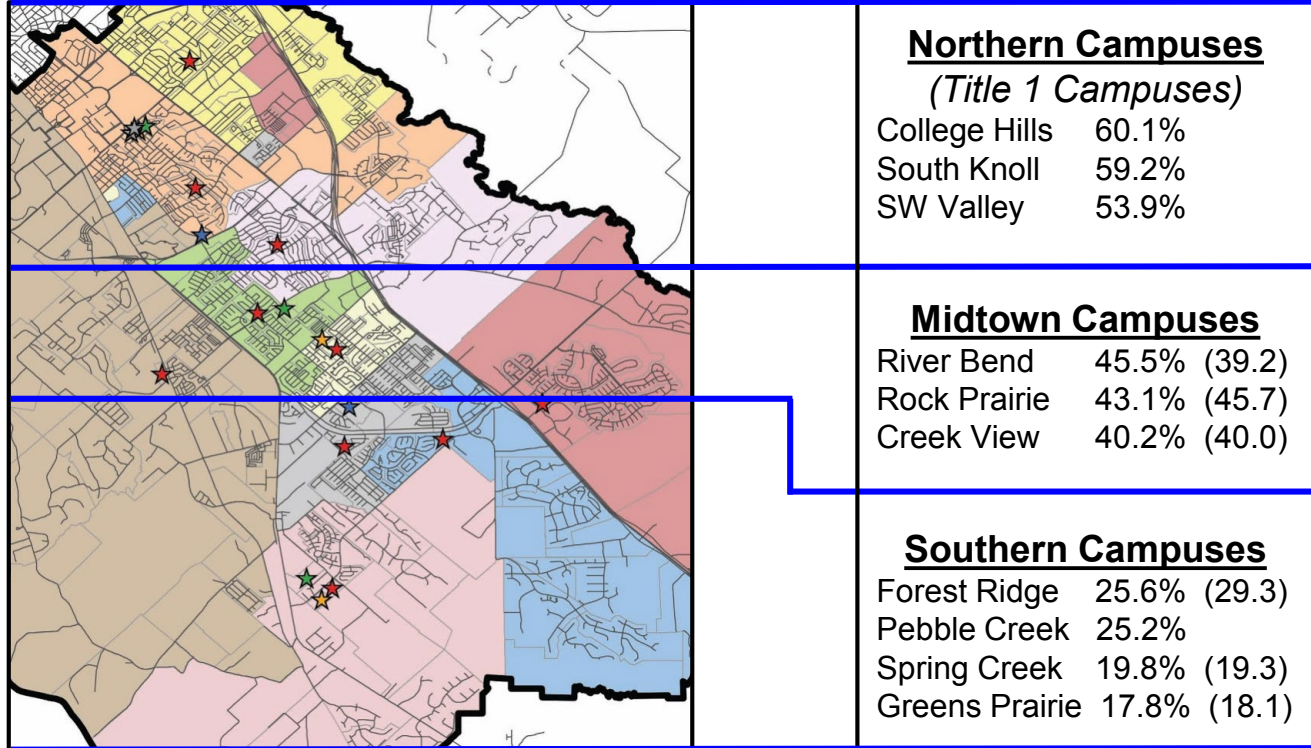


Oct. 8 - Projected Enrollment (Victoria / SW Pk. / EG / Iris)


Campus	Range	19-20	20-21	21-22	22-23	23-24	24-25	25-26
College Hills	561-726	632	651	653	668	680	693	699
Creek View	544-704	529	524	553	568	588	597	606
Forest Ridge	544-704	592	615	642	657	662	659	651
Greens Prairie	561-726	549	580	636	674	706	727	738
Pebble Creek	527-682	521	584	636	694	734	754	757
River Bend	561-726	444	465	493	513	527	533	540
Rock Prairie	527-682	573	573	550	550	561	555	577
South Knoll	561-726	613	617	630	624	626	623	618
SW Valley	561-726	536	526	518	519	544	573	602
Spring Creek	561-726	635	635	646	637	656	660	669
Total		5,624	5,770	5,957	6,104	6,284	6,374	6,457

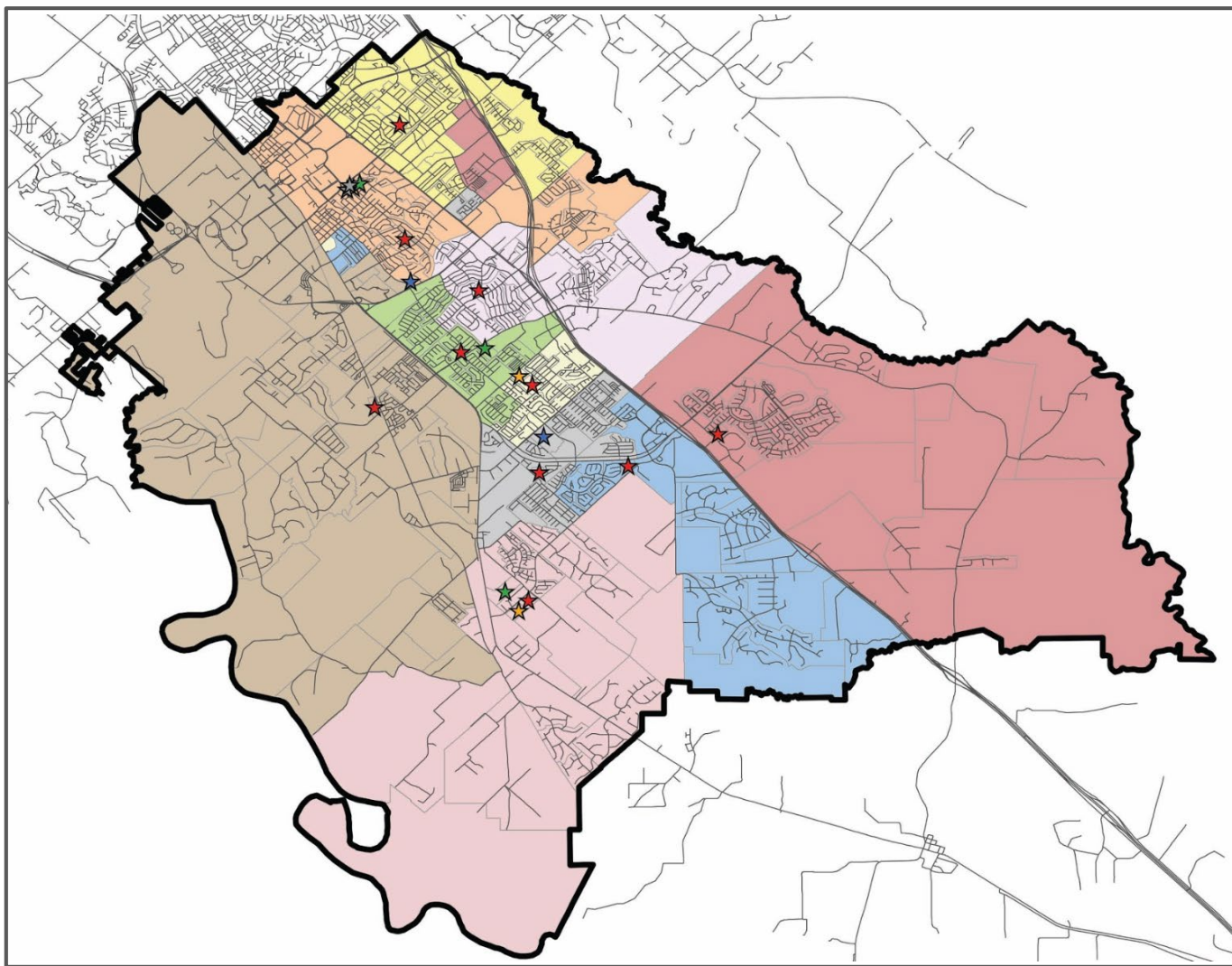


October 8 - Percent Econ. Disadvantaged



October 8 Recommended Elementary Attendance Zones

-  **College Hills**
-  **Creek View**
-  **Forest Ridge**
-  **Greens Prairie**
-  **Pebble Creek**
-  **River Bend**
-  **Rock Prairie**
-  **South Knoll**
-  **Southwood Valley**
-  **Spring Creek**





Grandfathering Recommendation

- All students entering 4th grade in 2019-20 whose attendance zones change may elect to grandfather and stay at their currently (2018-19) zoned school.

2018 Elementary Boundary Adjustment

A screenshot of the College Station Independent School District website homepage. The page features a navigation menu with links for Home, About CSISD, Board, Schools, Parent Info, Human Resources, and Directory. A large banner image shows a group of students holding a banner that reads "12 CSISD SENIORS NAMED NATIONAL MERIT SCHOLAR SEMIFINALIST". Below the banner is a "News and Announcements" section. The first news item, titled "Elementary Boundary Adjustment - 2018", is highlighted with a blue box and has a blue arrow pointing to it from the right. The second news item is titled "CSISD Employees Pledge Over \$127,000 to the Education Foundation".

Google Translate Search this site

College Station Independent School District

Home About CSISD Board Schools Parent Info Human Resources Directory

Community-Based Accountability
District of Innovation
Online Enrollment
Serve on a CSISD Committee
Calendars
Departments
Curriculum
Success 24/7
Chrissy's Closet
CSISD Quick Tip
CSISD Monthly Newsletter
Education Foundation
Leadership CSISD

12 CSISD SENIORS NAMED NATIONAL MERIT SCHOLAR SEMIFINALIST

News and Announcements

- Elementary Boundary Adjustment - 2018**
As part of the 2015 bond election, CSISD will open its 10th elementary school, River Bend Elementary, in August of 2019. In doing so, the CSISD board will redraw attendance boundaries this fall to accommodate the opening of the new school.
- CSISD Employees Pledge Over \$127,000 to the Education Foundation**
College Station ISD employees are breaking records in their giving to the district's Education Foundation this year by pledging over \$127,000 through the Employee Giving Campaign.

csisd.org

Website includes:

Maps

Presentations

Meeting Videos

Schedule



QUESTIONS

COMMENTS